

Network FAX

■ PC-Fax Specifications

For Use with e-STUDIO28, Network Fax Kit (GB-1040)	
Compatible machines	e-STUDIO28 * Optional GL-1010 and Fax unit (GD-1080) required.
OS	Windows® 98 Windows® Me Windows® NT 4.0 Windows® 2000 Windows® XP
Paper size	A3 maximum size (depends on the receiving station capacity)
Resolution when sending a fax	200 dpi x 100 dpi, 200 dpi x 200 dpi, 200 dpi x 400 dpi, 400 dpi x 400 dpi (depends on the receiving station capacity)

Network Fax Function for e-STUDIO3511/4511	
Network Fax Function for e-STUDIO350/450	
Compatible machines	e-STUDIO3511/4511 e-STUDIO350/450 * For e-STUDIO3511/4511, optional Fax unit (GD-1150) required. * For e-STUDIO350/450, optional expansion kit and optional Fax unit (GD-1150) required.
OS	Windows® 98 Windows® Me Windows® NT 4.0 Windows® 2000 Windows® XP
Paper size	A3 maximum size (depends on the receiving station capacity)
Resolution when sending a fax	200 dpi x 100 dpi, 200 dpi x 200 dpi, 200 dpi x 400 dpi, 300 dpi x 300 dpi, 400 dpi x 400 dpi (depends on the receiving station capacity)

Microsoft, Windows®, and Windows® NT are registered trademarks of Microsoft Corporation in the United States and/or other countries. All other brand and/or product names are trademarks of their respective owners. Design and specifications subject to change without notice. No part of this material may be used or reproduced in any manner whatsoever without permission. For hard drives, GB is equivalent to 1 billion bytes. Total hard drive accessible capacity may vary depending on operating environment. The fax function may not work properly depending on telephone line, regional and other conditions.
© 2004 TOSHIBA TEC CORPORATION All rights reserved.

DISTRIBUTED BY

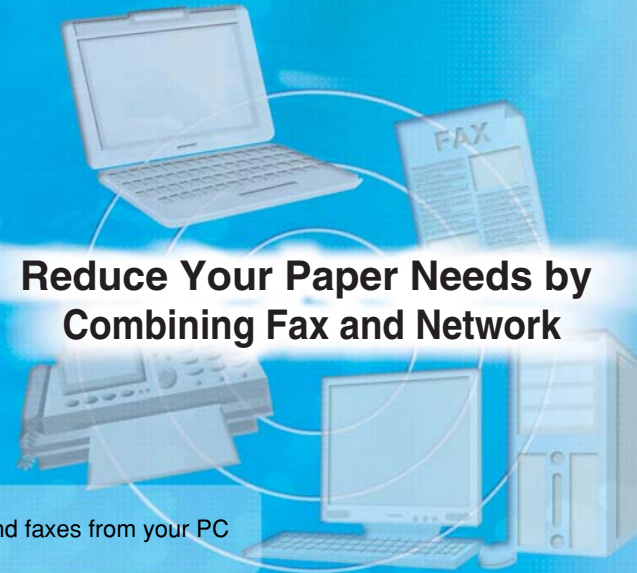
TOSHIBA

TOSHIBA OF CANADA LIMITED
OFFICE PRODUCTS GROUP
DIGITAL COPIERS • FAX • MFP • BUSINESS COMMUNICATION SOLUTIONS
HEAD OFFICE: 191 McNabb Street, Markham, Ontario, Canada L3R 8H2
Tel: (905) 470-3500 Fax: (905) 470-3459
WESTERN REGIONAL OFFICE: 349-25th Street, Calgary, Alberta, Canada T2A 7H8
Tel: (403) 248-3885 Fax: (403) 248-3929
EASTERN REGIONAL OFFICE: 18050 Trans Canada Hwy., Kirkland, Quebec, Canada H9J 4A1
Tel: (514) 390-7766 Fax: (514) 390-7770
<http://www.toshiba.ca>
<http://www.e-studioseries.com/>

TOSHIBA

Network FAX

Transmit, Receive and Forward Network Faxes



Send faxes from your PC

Automatically forward received faxes to your PC

Store received faxes on the HDD and share data

Applicable Model

e-STUDIO230/280
e-STUDIO350/450
e-STUDIO3511/4511
e-STUDIO550/650/810

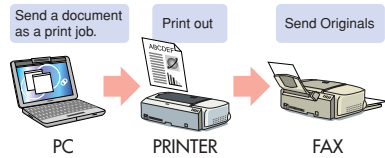
Network FAX

The Fax ↔ Network Office Environment Is Catching On

Reduce Paper Needs in Fax Communications with PC-Fax Transmission and Digitization of Received Faxes

CASE 1 Sending Faxes from Your PC directly

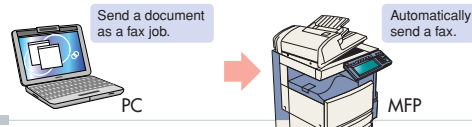
It's troublesome to print documents that I make on the PC and individually fax each one.



>>> We have the solution.

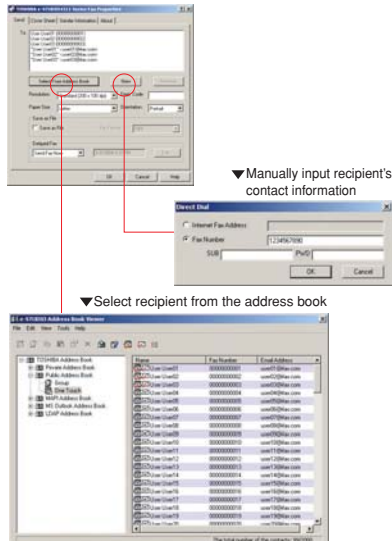
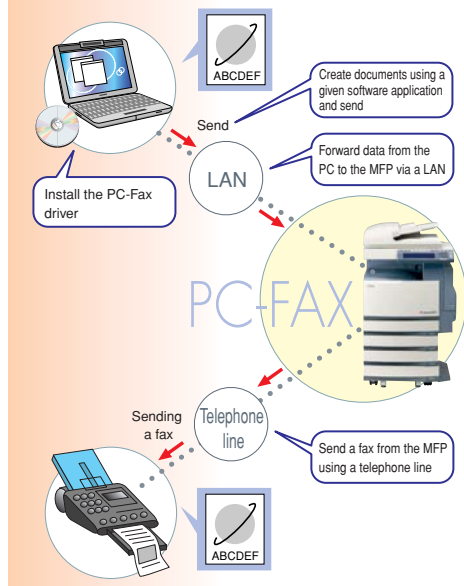
Send documents created on your PC as they are by Fax

Directly fax documents from your PC just as if you were printing a document. Reduce printing costs and the time it takes to send documents round trip between the PC and fax.



Sending by PC-Fax

Recipients will be able to print clearly legible, high resolution faxes because documents are sent as original images.

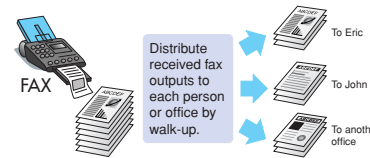


Manage contacts with the address book viewer, and select recipients when sending a fax. Manage contacts in the MFP address book or a local address book created individually with the address book viewer.

* Clients require no special licenses.

CASE 2 Store Received Faxes in a File

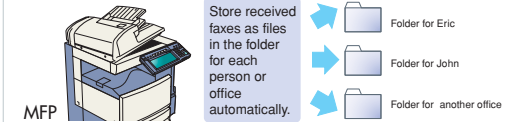
Numerous faxes arrive every day. Distributing them to their intended recipients can take a lot of time. Is there anything that can help streamline this process?



>>> We have the solution.

Save received faxes in files—without printing

Make distribution tasks more efficient. Manage received faxes as electronic data by storing them into a MFP shared folder and automatically forwarding them to a shared folder on the network—just assign an f-code sub-address when sending. Reduce printing costs by saving outputs of received faxes.



Storing in Files

Convert faxes into TIFF or PDF files and automatically forward them to a PC, no printing necessary.

Set the forwarding destination to a MFP device, a shared folder on the network or an e-mail address, or designate each one if the receiving party attaches a mailbox number (sub-address).

