

Toshiba EasyGuard
Carefree Mobile Computing



Toshiba EasyGuard is the better way to enhanced data security, advanced system protection and easy

connectivity. This next-generation computing experience incorporates technologies enabling optimal connectivity and security, Toshiba anti-accident innovations and advanced software utilities for carefree mobile computing.

Three core elements for carefree mobile computing

In addressing the need for enhanced data security, advanced system protection and easy connectivity, Toshiba EasyGuard features can be divided into three core elements:

- Secure** Features that deliver enhanced system and data security
- Protect & Fix** Protective design features and diagnostics utilities for maximum uptime
- Connect** Features and software utility that ensures easy and reliable wired and wireless connectivity



What is ConfigFree™?

Toshiba notebooks come complete with ConfigFree™ software to provide hassle-free, location-based connectivity for wired and wireless (802.11 a/b/g/n networks and Bluetooth™ devices) networks, making mobility easier and users more



productive. With ConfigFree™, you can quickly and easily set up a network connection, troubleshoot any connectivity problems you might encounter, and capture a complete set of location settings for easy, one-button future use.

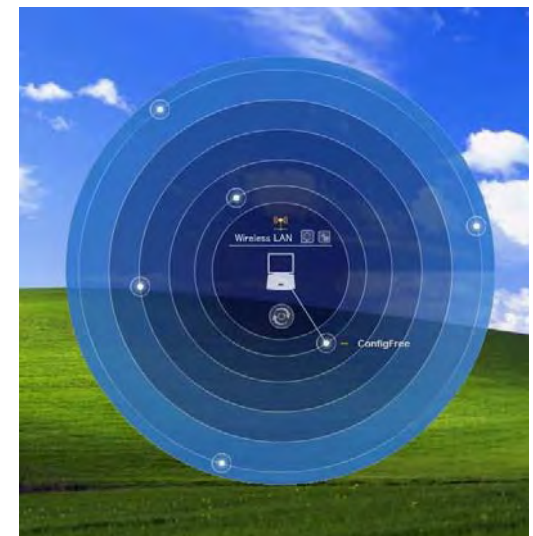


ConfigFree™ makes it easy for non-technical users to connect to Wi-Fi™ networks and Bluetooth™ devices as well as share files among locally connected users.

How it works

Find wireless devices and access points easily...

With ConfigFree™, you can search for nearby wireless connection possibilities: Wi-Fi™ access points, ad-hoc networks and Bluetooth™ devices. The utility presents the information in a clear, circular “radar screen” user interface. To connect to a device or access point, just click on it and drag a line to your computer pictured in the centre of the radar screen.

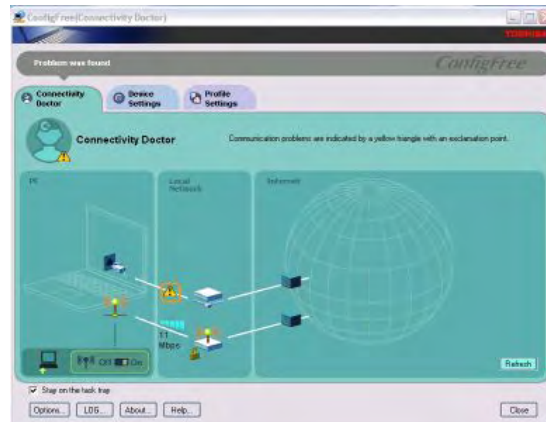


With ConfigFree™, a nearby active Wi-Fi™ access point is readily visible. Simply draw a line to set up a network connection.

Troubleshoot common networking problems...

Use the ConfigFree™ Connectivity Doctor to identify and resolve problems that may occur with your notebook's connections. For example, your IP address may be incorrect, power to your wireless network card may be turned off, or you may not have a valid WEP key.

The Connectivity Doctor presents a clear, graphical interface to indicate the source of the problem and can help you quickly and easily arrive at a solution to get you securely connected again.

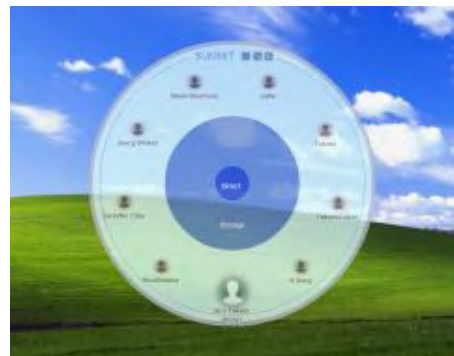


Analyse your network connection and assist in fixing any network connectivity issues.

Share files quickly with WLAN/LAN partners...

Using ConfigFree™ Summit, you can create a virtual meeting room, inviting all the local computers. You can then drag and drop files to share them with the entire "meeting room" or send a file privately to a single participant in the "room".

With a right-click, you can send a file to any computer in the local WLAN/LAN, or you can right-click to easily send a file to a nearby Bluetooth™ device.



ConfigFree™ Summit can create virtual meeting rooms.

Capture the local connection settings for future use...

Use ConfigFree™ to take a snapshot of your local network settings, default printer, and internet settings. Then, give your snapshot a "profile" name (Home, Office, etc.). In the future, you can adjust all your notebook's settings with one-button simplicity just by choosing the profile you want by name. ConfigFree™ can automatically switch between Home and Office profile settings.

Finally, ConfigFree™ can detect when you plug in a network cable and then automatically turn off the power to your Wi-Fi™ card in order to conserve energy. Once a network cable is unplugged, it restores power to the Wi-Fi™ card to keep you running and connected.

Summary of features and benefits

- ▶ **Wireless radar screen** Display nearby active Wi-Fi™ access points and Bluetooth™ devices in a clear, informative graphic interface; to connect to an access point or Bluetooth™ device, just drag a line between it and your notebook icon.
- ▶ **Connectivity Doctor** Analyze your network connection to isolate and resolve connectivity problems quickly and easily.
- ▶ **Profile Settings**
 - Capture all the local connection settings and associate them with a single profile name for future use.
 - Easily switch between profiles and share them through an import/export function.
- ▶ **ConfigFree™ Summit** Quickly and easily share files with computers in the local WLAN/LAN, or send files to a local Bluetooth™ device.